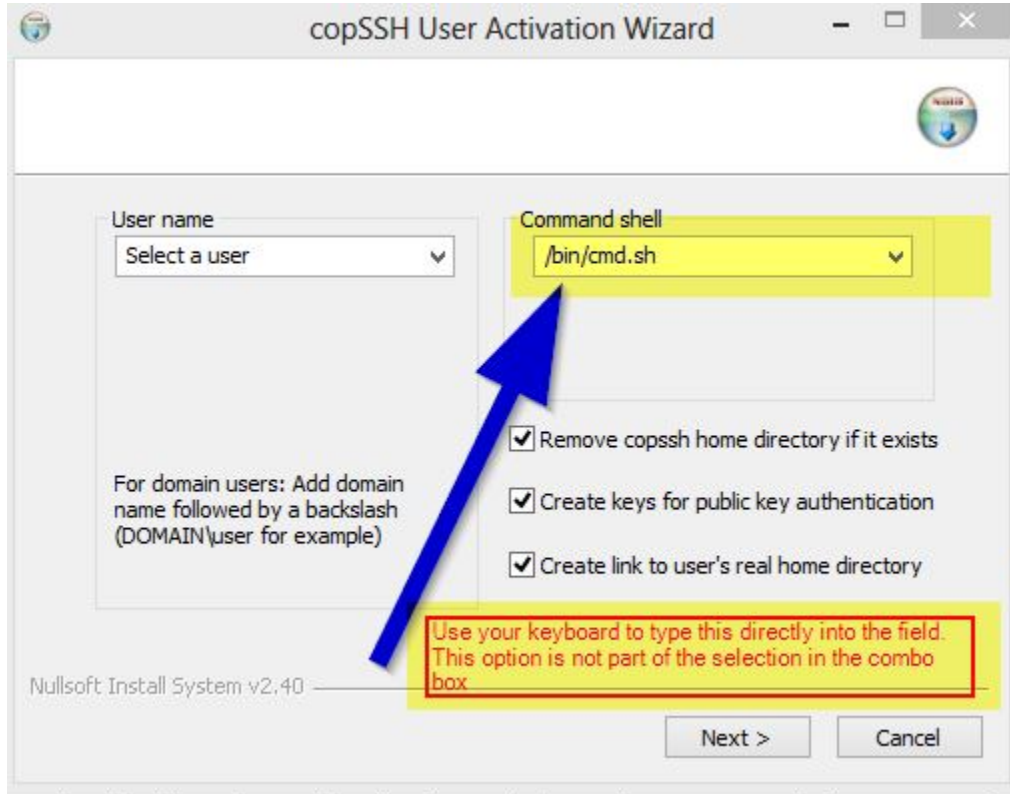


Agentless scheduling on Windows with copSSH

There are OpenSSH distributions available for Windows. We have had some positive experiences with copSSH. This article describes how to set-up the [free version of copssh](#).

However, all OpenSSH distributions are based on cygwin, so you won't find a standard Windows shell with the expected environment variables when logging on by SSH. Here's how you can modify your copSSH installation in order to get that environment:

- Download and install [copSSH](#)
- Download [ssh_windows.zip](#)
- Extract both files into the *bin* directory of your copSSH installation.
- If necessary, adjust the WINDOWS path in cmd.sh. (cygdrive is correct, that's where the Windows filesystem is mounted in cywin)
- Run "COPSSH->Activate a User" from the Windows Start Menu.
- Choose the user you want to active for SSH access and enter */bin/cmd.sh* as command shell. Attention: You do not have this option in the combobox but you have to type this manually.



When you now log in as this user by SSH, you will automatically have a Windows shell and the user's own environment variables.

With this you are now able to setup a [JITL SSH Job](#) and execute Windows commands with SSH.

Name	Value
host	localhost
user	SvcCOPSSH
password	
command	dir
auth_method	password

A blue arrow points to the 'command' field, which contains the text 'dir'. A red box contains the text: 'A windows command'.